

Office Phone: 480-491-1444

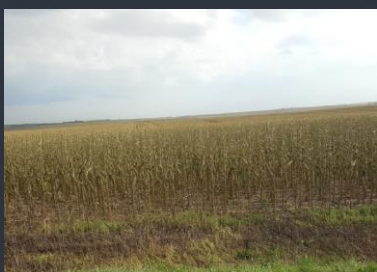
Email: farminc@cox.net

Spring Acreage

Spring acreage reporting time is upon us. You should have received your acreage reports via mail or email.

We are encouraging you to get in and certify your acres with FSA. Please let FSA know to forward FARM Inc. a copy of your 578's when they are complete so we can ensure your acres are reported correctly.

We are starting to do things via email more frequently here at the office. If you would like us to send things to you via email rather than through the mail please let us know. We want to make the process as easy as possible for you.



Check Us Out

FARM Inc. has a brand new look. We've completely redone our website.

Interactive links for rainfall policies, weather updates and commodity price trackers are now available to you along with much more. Swing by the new website to meet the team and stay up to date on all things FARM Inc. The QR code to the left will take you directly to the new and improved site or you can use www.farminc.biz.

Annual Forage

The base values per acre increased about 8% for 2022 on the annual forage policies. This will be applicable beginning with your fall plantings that will be covered under an annual forage policy. Please contact us for more information on how the increase could affect your operation.

Hail Coverage

Corn prices are at their highest levels in over eight years. Although revenue protection coverage has a harvest price component to protect against the risk of forward contracting, it does not cover a change in the local cash price basis. Additional hail (and wind) coverage can still be obtained during the growing season. This coverage will help minimize the risk to a more valuable crop.



10 Year Historical Corn Prices

If you would prefer to receive all future newsletters by email rather than by mail please send us a message stating so to: farminc@cox.net

Important Dates

- July 1st – Final date to make changes or to transfer existing policy to FARM Inc. for DRP, LRP and LGM policies. Premium billing date for fall crops.
- July 15th – Acreage reporting date for spring crops (beans, chile peppers, corn, cotton, ELS cotton and grain sorghum) and annual forage growing season 4. Final date to sign up or make changes to annual forage policies.
- August 15th – Premium billing date for spring crops.
- August 30th – Premium billing date for annual forage policies.
- September 1st – Premium billing date for PRF policies.
- September 30th – Final date to make changes or add coverage to your fall crops.
- November 15th – Final date to sign up or make changes to PRF policies.
Acreage reporting deadline for PRF policies.

The U.S. Department of Agriculture (USDA) prohibits discrimination against its customers, employees, and applicants for employment on the bases of race, color, national origin, age, disability, sex, gender identity, religion, reprisal, and where applicable, political beliefs, marital status, familial or parental status, sexual orientation, or all or part of an individual's income is derived from any public assistance program, or protected genetic information in employment or in any program or activity conducted or funded by the Department. (Not all prohibited bases will apply to all programs and/or employment activities.)



FARM Inc. _____
Financial And Risk Management

FARM Inc.
Gary McKenzie, Tim McMillen & Danielle McMillen
2069 E. Ranch Road
Tempe, AZ. 85284